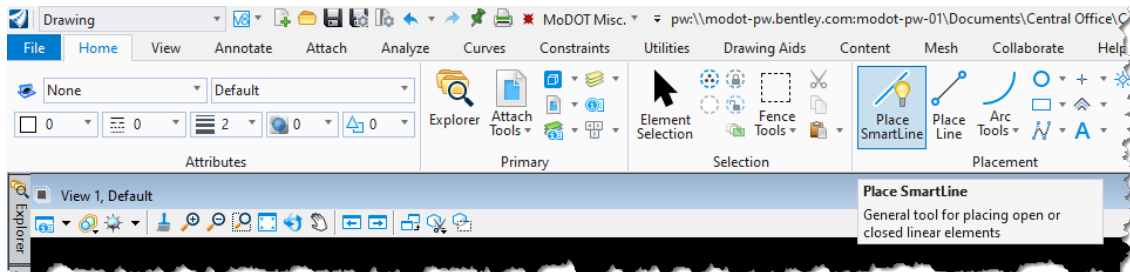


Building and Parking Lot Exercise

Open the file named **building_and_parking_lot.dgn** under your user folder. Review the last sheet in the exercise. This is what we be drawing and detailing.

Activate the **Place SmartLine** tool under the Drawing Workflow > Home.



Toggle on Civil Acudraw and invoke the **DX DY** option in the toolbox.



Zoom into the location in the file where it says **Start Here**. Using the snap mode of *keypoint* or *center*, snap to the center of the circle and **left click** to begin the line.



On the end of your cursor, you will see the dynamic dialog box for the DX DY option.



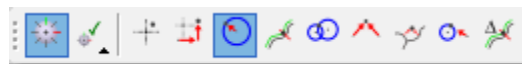
Type in **80** in the highlighted **DX** field and click **Enter** to accept and lock in that value. Now type in **0** in the **DY** field and click **Enter** to accept and lock in that value. **Left click** to accept that point. You should now have an 80' horizontal line.



Use that same Civil Accudraw method (**DX-DY**) and complete the rest of the Parking Lot area that is on **the last sheet of this exercise**.

Note: You will need to use the **DX-DY** civil accudraw option to get the starting point for the Building area.

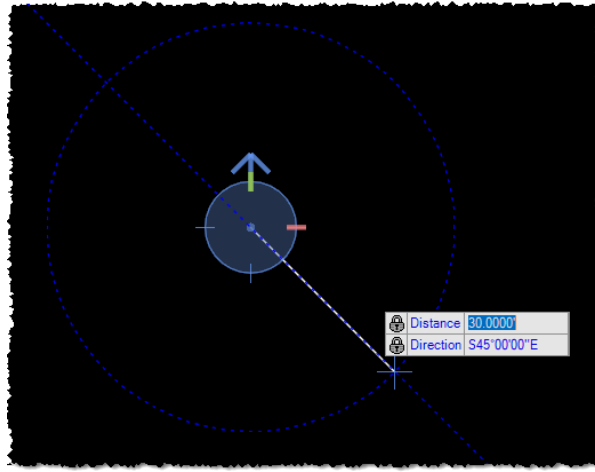
To construct the Building area, you will need to change the civil accudraw method. Change the Civil Accudraw method to the **Distance-Direction** option.



Begin constructing the Building using the **SmartLine** tool in the location as shown on the last sheet of this exercise.

Type in the distance in the highlighted **Distance** field and click **Enter** to accept and lock in that value.

Do the same for the **Direction** field. Once both fields are locked, **left click** to accept to complete the line.



Use the same Civil Accudraw method (**Distance-Direction**) and complete the rest of the Building area that is shown on the last sheet of the exercise.

You are finished with this exercise. There is no need to dimension this exercise.

